

[Software name] Touch panel driver2

[System requirements]

OS: macOS 10.14 / macOS 10.15
* This software is not available in the Classic Environment.
CPU: Intel processor
Memory: At least 4GB
Free space on hard drive: At least 10GB
USB terminal: USB 2.0 compliant

[Introduction of software]

This software is designed to be connected with the SHARP touch display to enable touch panel operation via Mac OS.

[Requirement of use]

This touch panel driver is only compatible with the following SHARP touch displays and option.

SHARP touch displays:

PN-L851H/PN-L751H/PN-L651H
PN-L805H/PN-L705H/PN-L803CA/PN-L803C/PN-L703WA PN-L703W/PN-L703A/PN-L703B
PN-L603WA/PN-L603W/PN-L603A/PN-L603B/PN-L501C/PN-L401C
PN-C703B/PN-C603D/PN-C805B/PN-C705B/PN-C605B
PN-85TH1/PN-75TH1/PN-65TH1
PN-80TH5/PN-70TH5/PN-80TC3A/PN-80TC3/PN-70TW3A/PN-70TW3/PN-70TA3/PN-70TB3
PN-60TW3A/PN-60TW3/PN-60TA3/PN-60TB3/PN-70SC3/PN-50TC1/PN-40TC1
PN-80SC5/PN-70SC5/PN-60SC5/PN-65SC1

SHARP touch pens:

PN-ZL01A/PN-ZL02A/PN-ZL03A/PN-ZL06/PN-ZL01/PN-ZL02/PN-ZL03

- * Touch drivers will not work properly if used with other Sharp touch displays.
- * You can register up to 8 touch pens in PN-ZL02A/PN-ZL03A/PN-ZL06 and up to 10 touch pens in PN-ZL02/PN-ZL03.
- * PN-L803C/PN-L703W/PN-L703A/PN-L603W/PN-L603A/PN-80TC3/PN-70TW3/PN-70TA3/PN-60TW3 /PN-60TA3/PN-ZL01/PN-ZL02/PN-ZL03 can be used with macOS 10.14, but not with macOS 10.15.
- * The touch pen bundled with the model below is called the active pen.
PN-L805H/PN-L705H/PN-L803CA/PN-L803C/PN-L703WA PN-L703W/PN-L703A/PN-L603WA
PN-L603W/PN-L603A
PN-80TH5/PN-70TH5/PN-80TC3A/PN-80TC3/PN-70TW3A/PN-70TW3/PN-70TA3/PN-60TW3A
PN-60TW3/PN-60TA3
PN-ZL01A/PN-ZL02A/PN-ZL03A/PN-ZL06/PN-ZL01/PN-ZL02/PN-ZL03

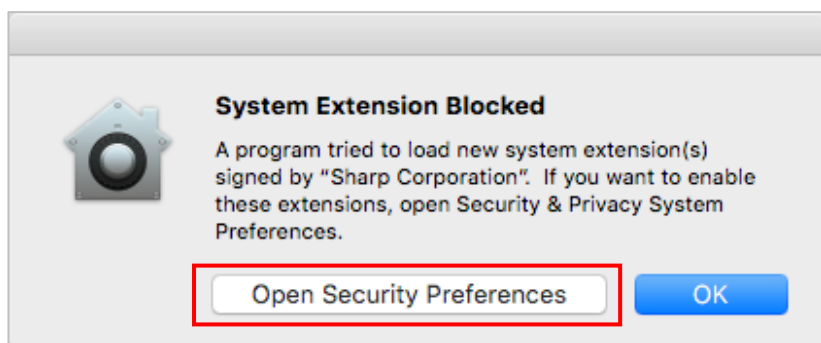
* The touch pen bundled with the model below supports the pointer function.
PN-L805H/PN-80TH5/PN-L705H/PN-70TH5/PN-ZL06

* The touch pen bundled with the model below is a dual-end pen and has two pen tips (thin end & thick end). You can use whichever end you like when setting to “Pen dedicated Mode” in “Touch Operation Mode” setting. (It doesn’t distinguish which end of the pen is used).

PN-L851H/PN-L751H/PN-L651H/PN-85TH1/PN-75TH1/PN-65TH1

[Note]

- You may not draw smoothly in the refresh rate settings of display under 30Hz. When drawing by the touch pen, set the refresh rate over 60Hz.
- You may draw smoothly by invalidating the writing pressure settings of pen in a software where you can set the writing pressure, such as Microsoft OneNote for Mac Version 16.20. You can change the writing pressure settings in the [Pressure Settings] of [Pen] tab.
- During installation, the dialog message “System Extension Blocked” as shown below may appear.

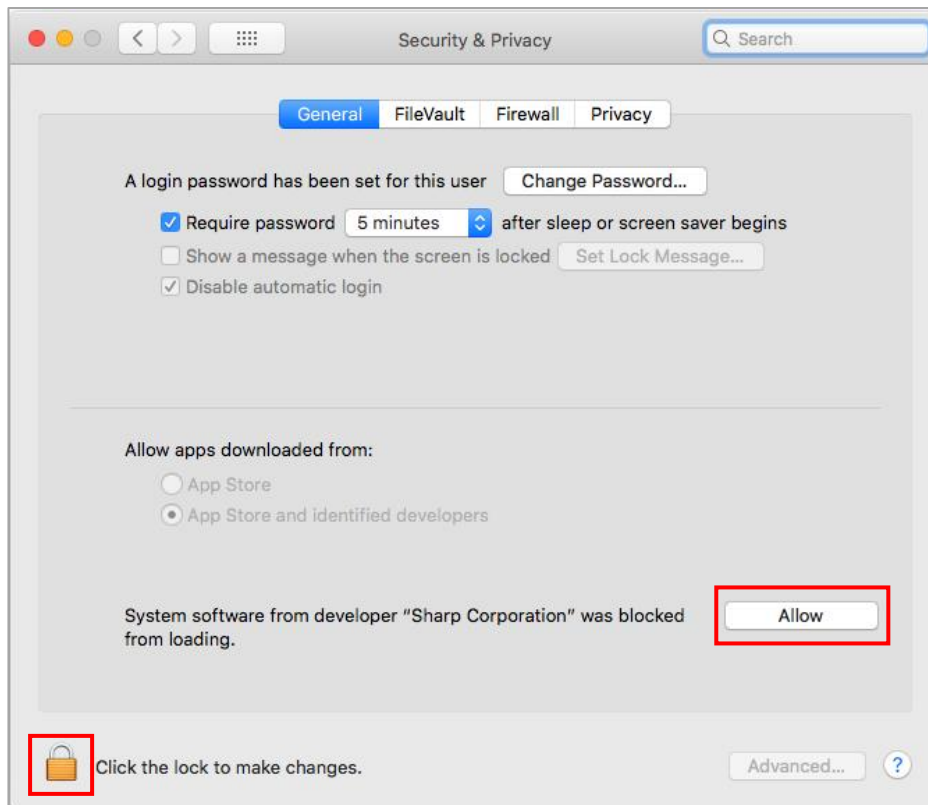


After installation, the dialog message as shown below may appear.



If the message appears, open “Security & Privacy Preferences” and then execute “Allow” in “Security & Privacy” to enable new extension included in this driver. Otherwise the driver cannot work properly; for example, touch operation will become unstable or not work at all.

If “Allow” button is disabled, you need to click the padlock on the lower-left corner and enter an Administrator username and password when prompted.

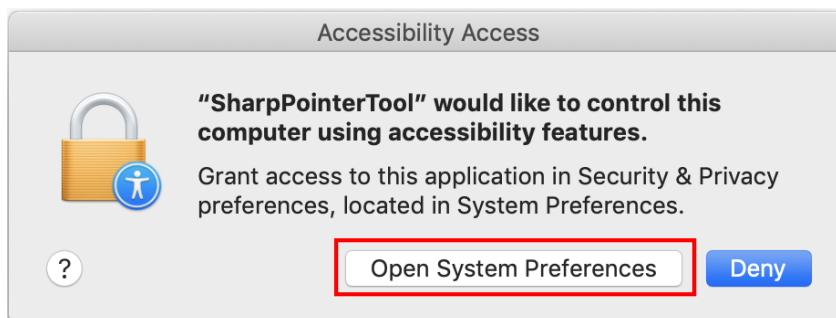
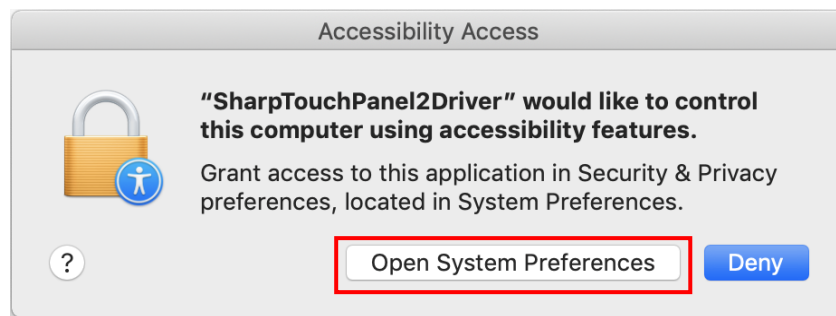


To enable new extension after the driver installation, you can open Security & Privacy system preference panel, and then execute “Allow”. However, you also need to install the driver again if there’s no message to allow the system software blocked.

Even when you’ve already executed “Allow”, the system driver may not be loaded properly and the following message may appear if the macOS driver cache has some problem. In this case, you also need to install the driver again.

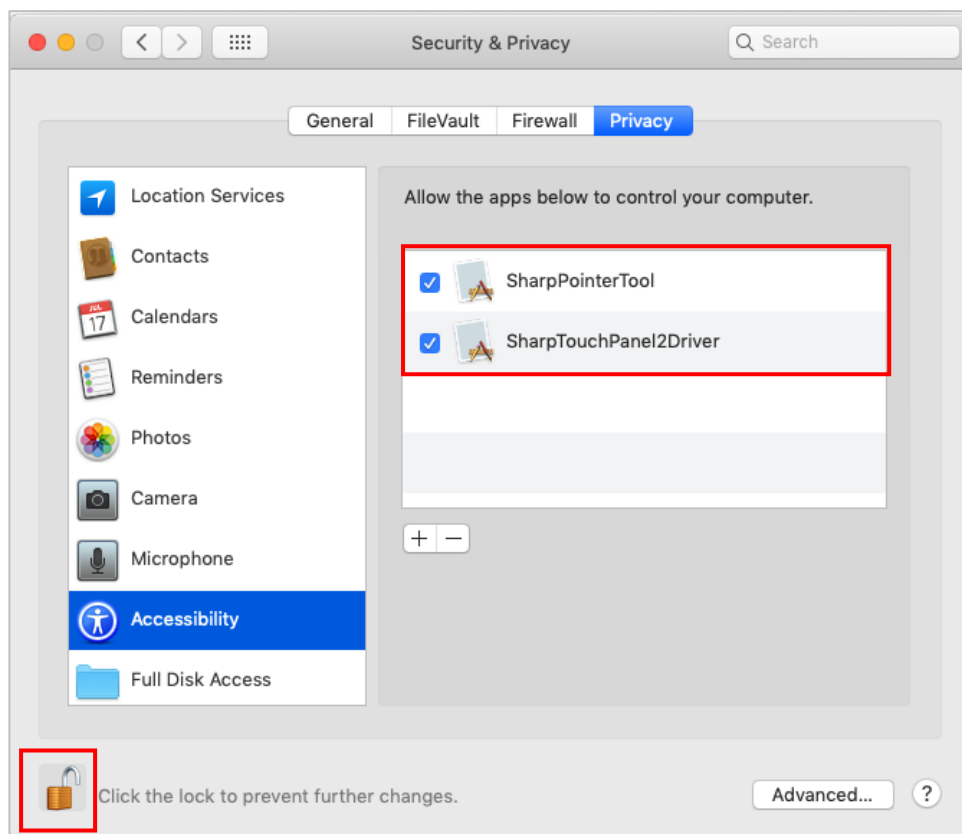


- After installing this driver in macOS10.14 or macOS10.15 for the first time, the dialog messages as shown below will appear.

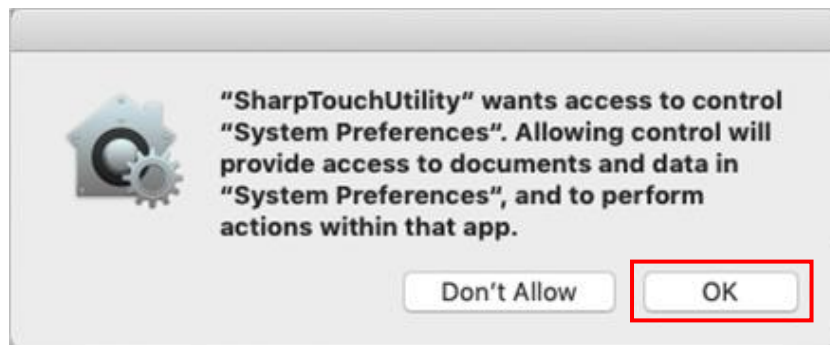


Select "Open System Preferences" and then grant access to Accessibility feature to "SharpTouchPanel2Driver" and "SharpPointerTool".

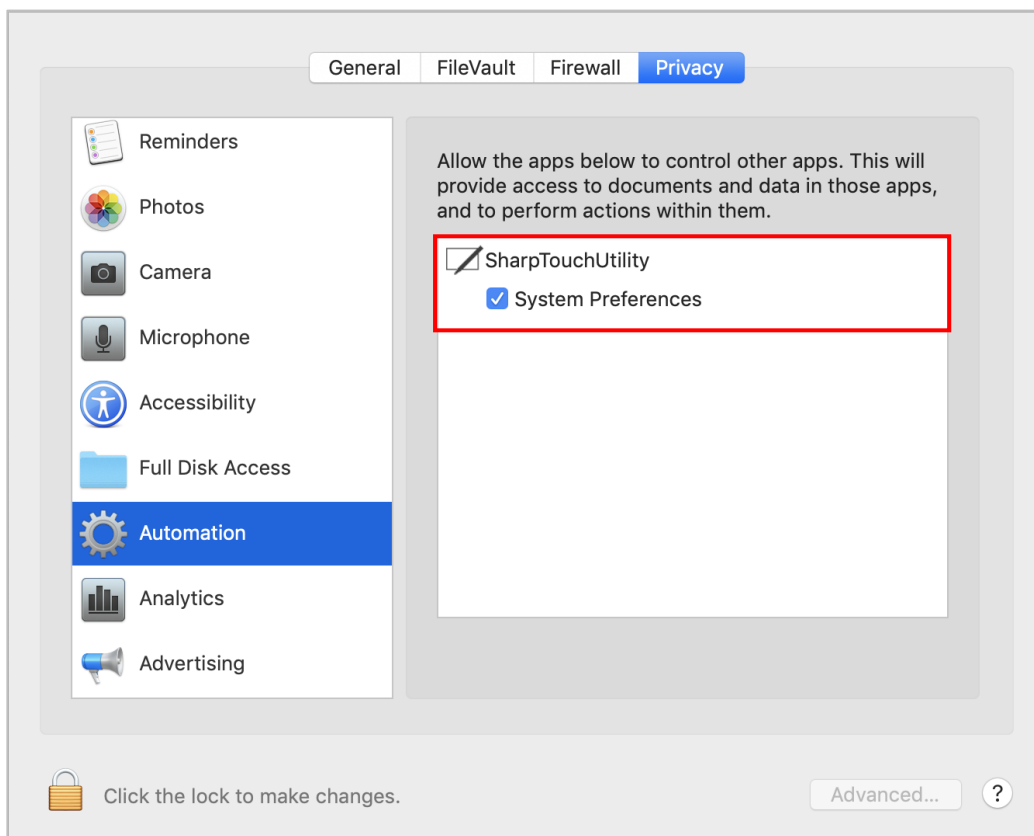
To allow them, click the padlock on the lower-left corner and enter an Administrator username and password when prompted.



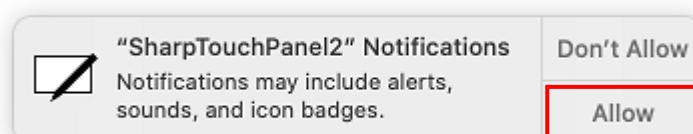
- After installing this driver in macOS10.14 or macOS10.15 and then trying to show a menu from the icon on the menu bar, the dialog message as shown below will appear.



Select “OK” to grant access to System Preferences to “SharpTouchUtility”. To show the setting screen, open “Privacy” in “Security & Privacy” preferences and select “Automation” and then check the “SharpTouchUtility” check box.

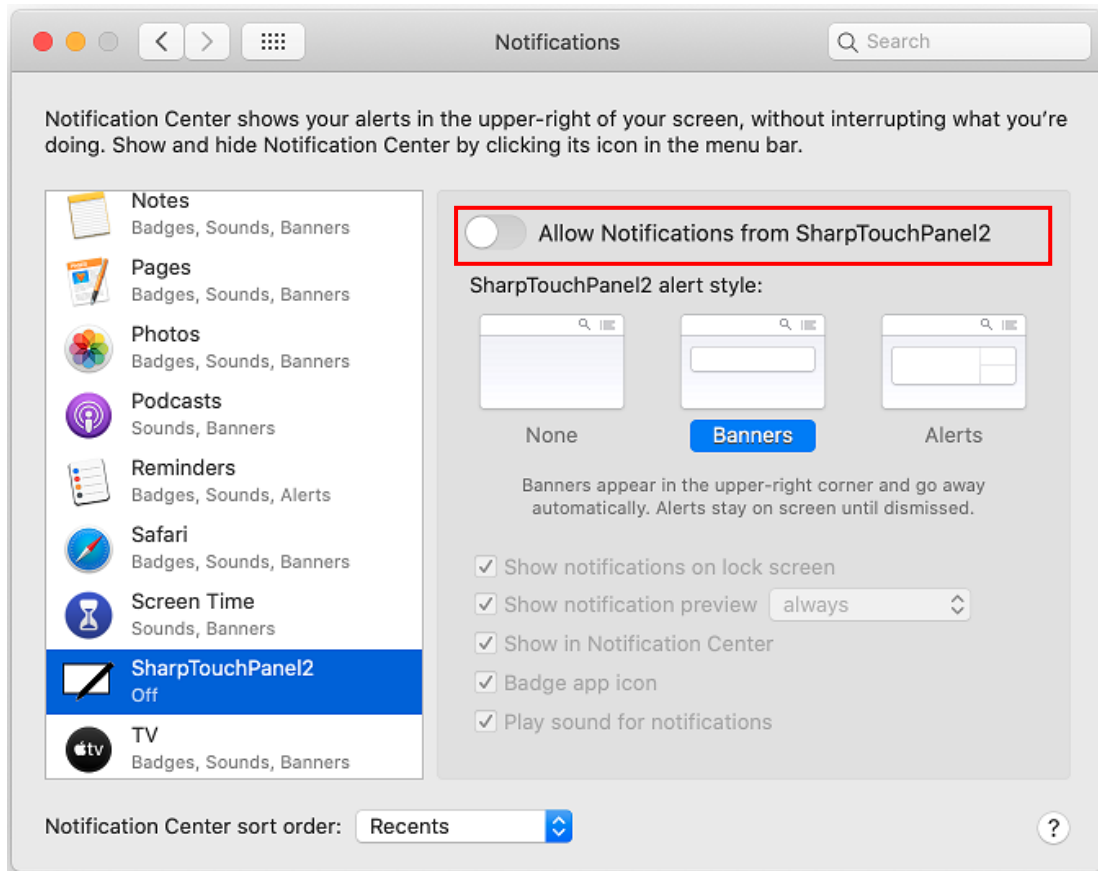


- After installing this driver in macOS 10.15 for the first time, “SharpTouchPanel2 Notifications” messages as shown below may appear.

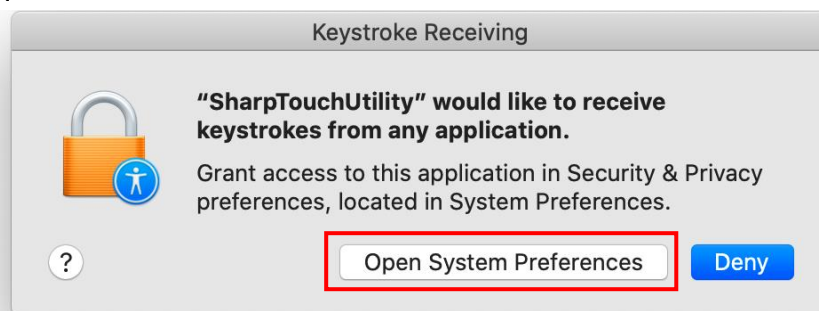


By executing “Allow” SharpTouchPanel2 Notifications, the Notification message will appear if the battery of touch pen (PN-ZL02A/PN-ZL03A/PN-ZL06/PN-ZL02/PN-ZL03) becomes low.

You can also open “Notification” preferences and change the setting like below anytime.



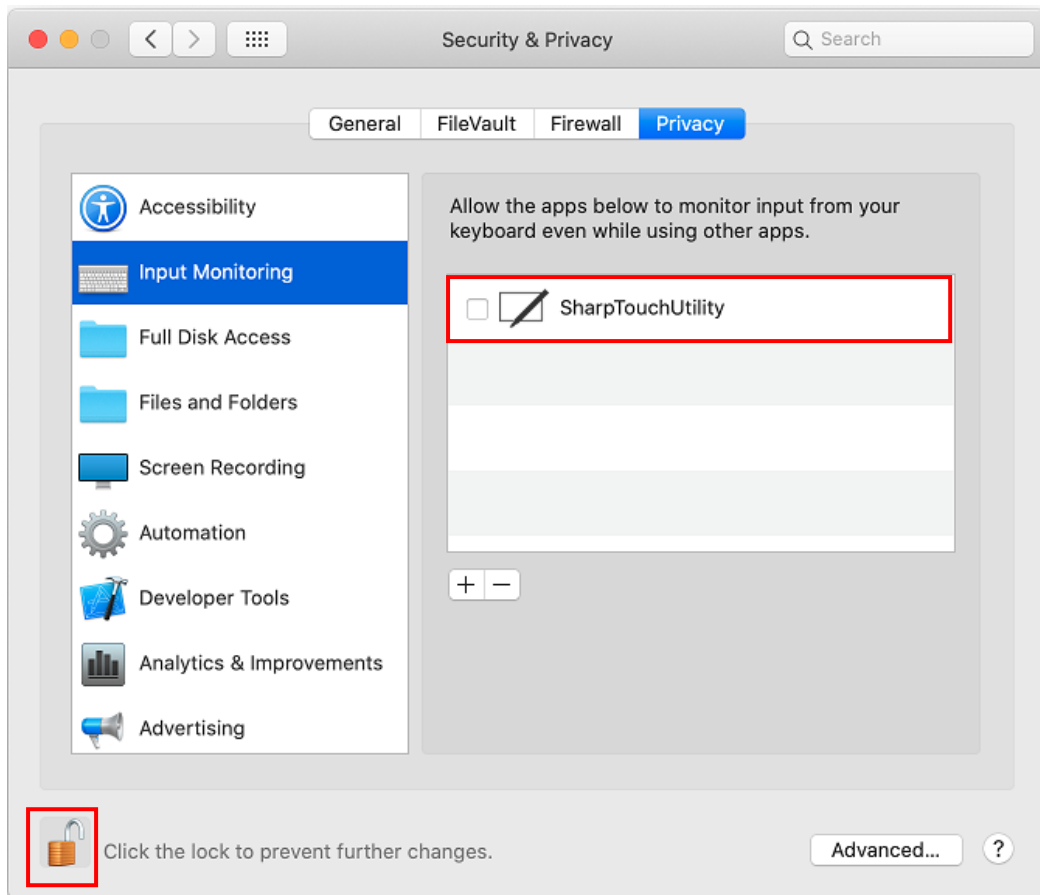
- After installing this driver in macOS 10.14 or macOS10.15 for the first time and then connect a touch pen adapter (PN-ZL02A/PN-ZL03A/PN-ZL06), the dialog message as shown below may appear.



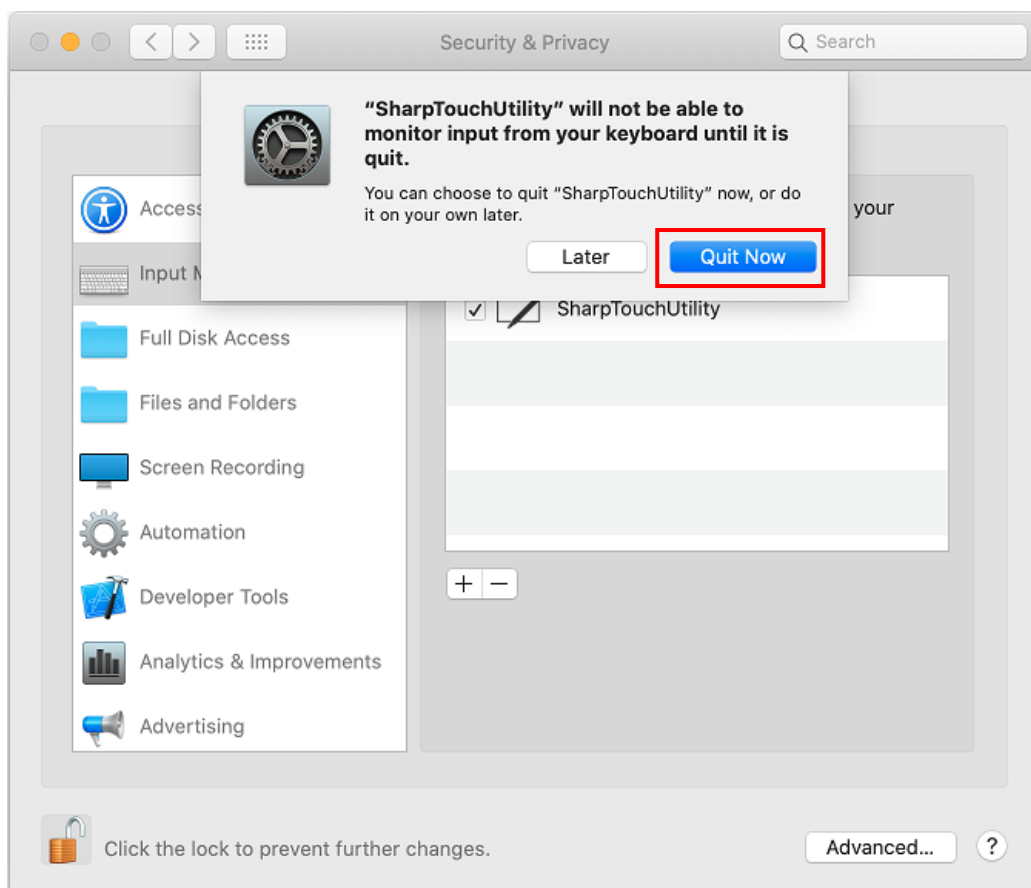
Select “Open System Preferences”.

To show the setting screen, open “Privacy” in “Security & Privacy” preferences and select “Input Monitoring”.

Click the padlock on the lower-left corner and enter an Administrator username and password when prompted, and then check the “SharpTouchUtility” check box



When the setting is changed, “Quit Now” button is shown, then select the button.
When “Quit Now” is executed, “SharpTouchUtility” will quit and start automatically to enable the change.



[Restrictions]

- The SHARP touch display and 1 additional display is the current max allowed to be connected with a Mac computer. Both displays can be used simultaneously.
- The models that support multiple screens are PN-L803C/PN-80TC3/PN-L705H/PN-70TH5/PN-L805H/PN-80TH5.
Up to two screens can be connected.
- “Ink” located under System Preferences is not available with this touch panel driver.
- The following touch gestures listed below in [1] thru [4] may switch off other touch gestures functions. Suggestions are provided to use switched off touch gestures.
 - [1] When the checkbox for “Spread with thumb and three fingers (show desktop)” is set to ‘off’ , you cannot use the touch gesture function to (close Launchpad).
To (close Launchpad), you can tap any area of the screen besides the icon.
 - [2] When the checkbox for “Pinch with thumb and three fingers (open Launchpad)” is set to ‘off’ , you cannot use the touch gesture function to (close the desktop).
To (close the desktop), you can tap the transparent area in the edge of the screen.
 - [3] When the checkbox for “Swipe down with three or four fingers (display App Exposé)” is set to ‘off’ , you cannot use the touch gesture function to (close Mission Control).
To (close Mission Control), you can use the “tap the screen” .
 - [4] When the checkbox for “Swipe up with three or four fingers (display Mission Control)” is set to ‘off’ , you cannot use the touch gesture function to (close App Exposé).
To (close App Exposé), you can use the “tap the screen” .
- In order to wake up from the sleep mode with tap operation on the touch display, tap the screen several times.
- Do not touch the touch panel when booting the computer or connecting the USB cable. If you touch the touch panel at that time, it will lead to a malfunction. In this case, disconnect and then reconnect the USB cable.
- In case of PN-L501C, PN-50TC1, PN-L401C and PN-40TC1, set the eraser function of touch display to “OFF” .
- Even if the screen shows that the remaining time of installation is less than 1 minute, it may take time depending on the environment.

-
- * Apple, Mac, macOS are trademarks of Apple Inc., which are registered in United States and other countries.
 - * Intel is a trademark or registered trademark of Intel Corporation or its subsidiaries in the U.S.A. and other countries.
 - * Other company names and product names are trademarks or registered trademarks of respective companies which are registered in each country.